

# FireWorks

## Graphical Command Interface Features and Operation (fire and emergency communications)

For detailed hardware ordering information, specifications, and installation information, please see catalog sheet 85006-0048.



### Overview

FireWorks<sup>™</sup> is a powerful family of software and hardware options that work in concert with Edwards Mass Notification/Emergency Communication (MNEC), Life Safety and Property Protection systems.

FireWorks provides an intuitive user interface, taking what could be an overwhelmingly large amount of information and presenting it in an easy-to-understand format. FireWorks does this by dividing major system functions into easy-to-manage viewports. These viewports make the system intuitive to use because information is presented logically.

FireWorks is event driven. This greatly increases the user's ability to deal with system events by eliminating the confusion sometimes experienced when systems present all information at once. FireWorks automatically prioritizes the events for the user in an *Event Viewport*. Here the highest priority event is displayed first, and the lowest priority event is displayed last. This allows the user to quickly determine which events warrant the most immediate attention.

Each of the other supporting viewports provides specific information and/or control options that relate to the event highlighted in the Event Viewport. Related information may include event action information (specific tasks the user may need to perform in response to the event), or information about the area where the event has taken place (any hazardous materials present in the area, etc.). Images, CCTV, video, audio messages and graphical maps may also be presented to aid in the understanding of an event and how it should be managed.

### Standard Features

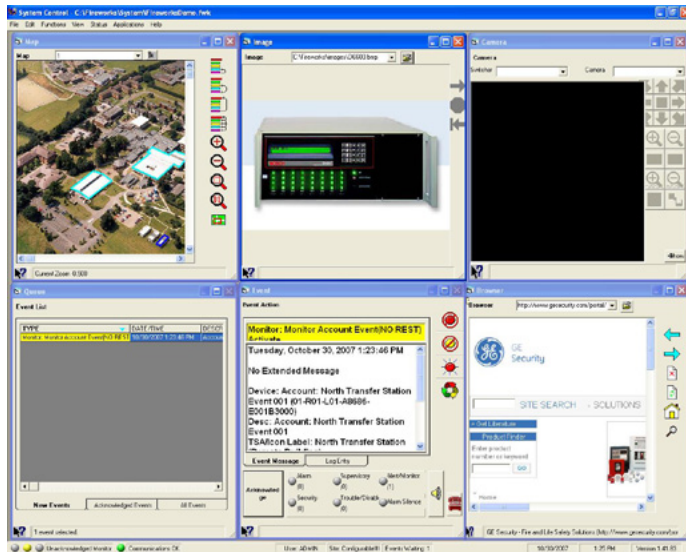
- **UL listed for MNEC and fire**
- **Event-driven configurable multiple viewport display**  
Automatic prioritization of events simplifies the system for the user.
- **Software-only versions**  
Where UL listings are not required, FireWorks software allows the use of less expensive PCs for monitoring-only functions, while providing a full-featured graphic display.
- **Interactive life safety control**
- **Monitor and control for single or multi-line Life Safety networks**
- **E-mail events to multiple recipients**
- **Optionally view textual events and run reports remotely via an Internet, LAN or WAN connection**  
Provides remote diagnostics.  
Provides remote system status display.
- **Password-defined user access**
- **Context-sensitive event action messages**  
Provides event-specific instructional text.
- **Use native graphic formats to create event maps**  
Import most standard graphic formats, such as wmf, dwg and more.
- **Optional Digital Alarm Receiver Connectivity**  
Provides the ability to monitor and display events from fire and security panels of different manufactures at a common location.

## Application

FireWorks is ideal for any system that gathers information from many points in a building. FireWorks allows the interface of compatible fire alarm control systems to one or several workstations. This permits monitoring and control of multiple areas or buildings from a single point of system access.

## Operation

Each operator can configure the system to have anywhere from 2 to 6 viewports. Viewport options are Map, Image, Event List, Event Action, Browser and CCTV.



### Monitor Event

The *Event List Viewport* (lower-left viewport in the above image) displays new events in order of priority. The *Event Action Viewport* (lower-middle viewport in the above image) can display custom message text. Custom message text helps the user understand any specific hazards present in the area where an event is taking place, or it could be used to help understand what procedures need to be followed for the specific type of event being reported by the system.

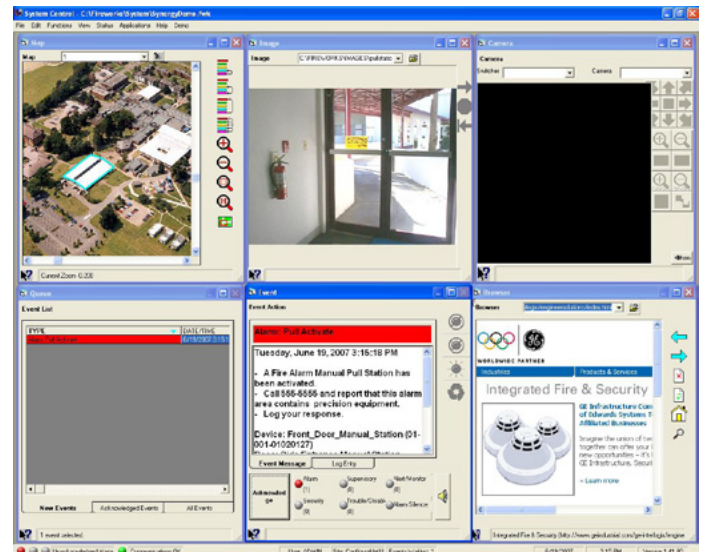
Common control switches for Alarm Silence, Panel Silence, Drill and Reset are also available in the Event Action viewport. Also accessible from this viewport are the Event Acknowledge button, the Computer Silence button, and the Event Log tab.

The *Image Viewport* (upper-middle viewport) can display still graphic images, movie .AVI files or real-time CCTV images. The *Map Viewport* (upper-left viewport) contains smart map navigation and control switches, making branching through maps and zooming in on specific devices fast, simple, and efficient. The exclusive FireWorks Zoom Function allows the user to quickly retrieve very detailed information that may be present on a map, while the big picture remains in view, thanks to an automatically-generated interactive Keymap Display. Different systems conditions affect whether the graphic control switches are enabled or disabled.

## Event List Viewport

Upon receipt of an alarm condition the alarm event is displayed in the Event List Viewport. If several events are received, all events are displayed in the Event List viewport and are color-coded by priority. The highest priority event is displayed at the top of the list. The lowest priority event is displayed at the bottom of the list. Alarm events display in red, Supervisory and Trouble events display in yellow, Restores announce in green.

FireWorks automatically selects the first event received. To display information on any other event, the user simply selects the event by clicking on it. The other viewports automatically change to display information on the selected event.

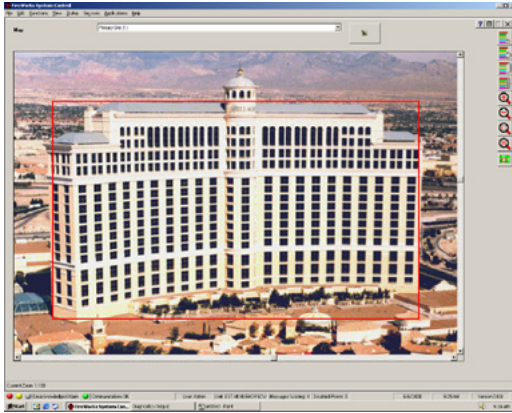


**Alarm Event:** Summary information is displayed in the Event List (lower-left), while more detailed text and graphics show in the other viewports. The first alarm is selected by default.



## Map Viewport

This viewport provides a graphical display of the event's physical location. This viewport is customized to the layout of the facility. A site map may be displayed showing one or multiple buildings. This gives the user an overview of the event's location in the context of its surroundings and the entire facility.



**Map Viewport:**  
This gives the user an overview of the event's location in the context of its surroundings and the entire facility.

In this configuration an event will begin to flash the appropriate TSA (touch-sensitive area) or alarm area in red. This gives a clear indication of the general area of the alarm. The operator may then touch the flashing area to advance to the next screen providing a more detailed view of the area of incident. The operator may also choose to go directly to the device in alarm.

From within the Map Viewport the operator may, if given authority through Fireworks password protection, enable or disable devices, retrieve device sensitivity, or modify specific extended message text for any device. The Enable /Disable devices option is useful when a device needs to be removed from the system because, for example, construction work in an area may create an unwanted alarm. Any disabled devices put the fire panel in trouble and announce on the FireWorks PC. This ensures the operator understands that the system is not fully operational.

The Sensitivity option allows the operator to access sensitivity reports on specific devices. The Extended Message option gives the operator the ability to modify the text displayed in the Event Message Viewport. This is useful for keeping emergency plan information updated and for helping ensure instructional text is kept current when building occupancy changes.

In addition to the FireWorks simplified event driven operator interface that brings unparalleled ease of operation, FireWorks continues the ease of operation design with report functionality that allows the system administrator or other user with the proper authority to retrieve panel reports. Reports include Panel Status, Disabled Points and Sensitivity. Meanwhile, a full history report generator allows the review of historical panel events.

To enhance off-premise notification, FireWorks supports connection to an SMTP mail server, allowing event information to be e-mailed. This provides the ability to get event information automatically, efficiently and inexpensively to the people who need to know about events in your facilities.

## Web Clients

FireWorks automatically conveys new events to any logged-in web client so that they are always in touch with current system status from a remote location in real time, without having to refresh the screen. Events mirror the display on the remote system and are color-coded for easy identification by type and source. Any number of remote web clients can be deployed by FireWorks. The number of concurrent connections possible is determined by the FireWorks model. The web client can also run reports for the remote workstation and print them to a local printer or output them to a .csv file.

## Engineering Specification

The Graphic Workstation Functions shall display the address of the alarm or off-normal point with type and description and time of the event in a prioritized color-coded event list. Highlighting an event in the event list shall automatically cause the other viewports (described below) to display information relating to the highlighted event. The system LCD shall display color graphical representation of the area in which the alarm or off normal device is located. It shall be possible for the operator to manually zoom down to any portion of a vector-based graphic without aliasing, artifacting, or pixilation of the image. Preset zoom levels shall not be considered equal. There shall be a set of written operator instructions for each point. It shall be possible to display a <preset CCTV video> and/or <stored image of the device>. The operator must be able to Log comments for each event to history with time and date. The history must be accessible for future review.

It must be possible to operate common control functions from the Workstation including acknowledging, silencing, and resetting of fire alarm functions while maintaining UL listings. It must be possible to manually activate, deactivate, enable, and disable individual fire alarm points. The workstation shall be capable of generating status, maintenance and sensitivity reports for all fire alarm components. The workstation must be capable upon receipt of a fire alarm to activate an audio WAV file over the workstation speakers alerting the operator to an alarm<, and providing audible instructions.>

The workstation must be capable upon receipt of a <Fire Alarm>, <Security Alarm>, <Access Control Event>, <Monitor Event> to send e-mail messages to appropriate recipients via a SMTP mail server.

It must be possible to control Closed Circuit Television (CCTV) by <providing a video display on one viewport of the workstation as received from the CCTV switcher-matrix><the workstation commanding the switcher matrix to a specific camera and CCTV monitor.> The workstation shall command the switcher-matrix to direct

the appropriate camera to the preset azimuth and elevation for each event, and send this image to the <workstation><CCTV monitor>. Where the CCTV image is displayed on the workstation it shall provide manual pan, tilt, and zoom control signals to the switcher-matrix. The workstation must provide Maintenance and Control Functions that include Control capability, Reports, status, sensitivity. The workstation must provide an extended message per event, site programmability of the message must be provided allowing modification by the end user to suit occupancies and emergency plans.

It shall be possible via a compatible remote PC connection through an accessible connection to a VPN, LAN, or WAN to obtain status, diagnostics, and reports from the workstations. The graphics work station shall act as a server to simultaneously communicate the status of all systems connected to the graphics workstation to up to five (5) concurrent remote PCs running graphics client software over the owner's data network or VPN. Client software shall actively poll the graphic work station server to determine event status. All event changes shall be automatically announced on the client PC. No operator interaction shall be required to retrieve or display incoming events. Web browser technology shall not be considered as equal. All workstation to client communications shall be encrypted for privacy. It shall be possible to capture at the remote PC events that take place on the workstation. It shall be possible from the remote PC to run workstation and panel reports.

The workstation shall be capable of communicating through one or multiple digital alarm receivers to display events from any panel that supports Contact ID or 4/2 industry standard protocols.

The workstation shall provide the ability to schedule the automatic running of reports. Reports shall be capable of being scheduled daily, weekly or monthly. Scheduled reports shall be automatically stored electronically for easy retrieval.

The Workstation shall provide for simple control via a computer mouse, touchscreen and keyboard commands.

## Ordering Information

Catalog Number	Description
FW-CGSUL	Color Graphics Software supports text annunciation, graphics and reports. Must be run on UL-listed PC. Provides a full-featured Event driven six-viewport graphic display. Supports EST3 EST2, IRC-3, and FCC systems. See Note 1.
FW-CGS	Color Graphics Software. Provides event driven six-viewport graphic display. No common control. Use with IRC-3, EST2 and EST3 systems. Requires minimum 400 MHz Pentium class PC, Windows XP operating system, 256 Meg memory recommended, CD ROM drive.
SV*	SiteVision - Allows use of existing CCTV monitors with control of CCTV (CCVE) system. No FireWorks on-screen control provided at Fire PC.
SV+*	SiteVision+ Provides on Screen annunciation of CCTV at FireWorks PC. Allows control of cameras through CCTV matrix or multiplexer. Order video card set part number FW-VID separately.
FW-1S*	One seat Web client.
FW-4S*	Used in conjunction with FW-1S provides 4 additional concurrent remote client seats for a total of 5 seats supported.
FW-DARCOM*	Provides connectivity for 1 to 8 Digital Alarm Receivers.

\*Operates with FW-CGS\*\* series software



**Detection & alarm since 1872**

**U.S.**

T 888-378-2329

F 866-503-3996

**Canada**

Chubb-Edwards

T 519 376 2430

F 519 376 7258

**Southeast Asia**

T : +65 6391 9300

F : +65 6391 9306

**India**

T : +91 80 4344 2000

F : +91 80 4344 2050

**Australia**

T +61 3 9239 1200

F +61 3 9239 1299

**Europe**

T +32 2 725 11 20

F +32 2 721 86 13

**Latin America**

T 305 593 4301

F 305 593 4300

[utcfireandsecurity.com](http://utcfireandsecurity.com)

© 2010 UTC Fire & Security.

All rights reserved.

---