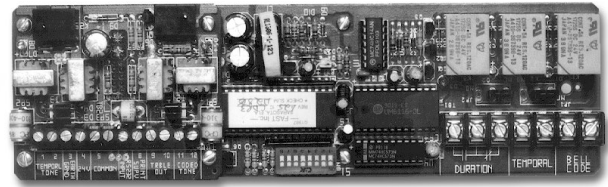


LIFE SAFETY & INCIDENT MANAGEMENT

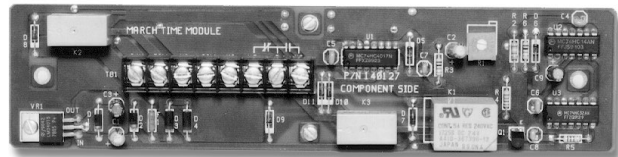
## Coders

Models CDR-3 (PSNI)

MTM-1 (March Time)



**CDR-3, PSNI**



**MTM-1, March Time**



### Overview

#### CDR-3

The CDR-3 Coder is a microprocessor based system option module that provides audio and dry contact coded outputs. The coder activates in response to alarm information received over a supervised RS-232 communications circuit from a fire alarm panel output port.

The CDR-3 provides five LED status indicators. The module is supervised for loss of RS-232 communications from the host panel. Should communications be lost, the module will enter the fail-safe mode and automatically send a temporal signal from the coder outputs. The supervised PSNI and temporal tone outputs also transmit supervisory tones for circuit supervision. Loss of 24 VDC power, and microprocessor failures are also supervised. Module failure indication is provided with a dry relay contact.

#### MTM-1, March Time

The March Time Coder provides March Time, Morse "S", or Morse "U" codes. The on board generated code is selected by contact closure or terminal block jumper configurations. The output is provided through Form C dry contacts. The MTM is activated by applying power through a contact closure, such as the common alarm contact closure from the power supply on the 24 VDC system power supply.

### Standard Features

#### CDR-3

- Microprocessor controlled
- RS-232 Input
- 1,000,000 code possibilities
- Active supervision of RS-232 port
- Positive Successive Non-Interfering
- Trouble output for coder failure
- 2, 3, or 4 digit code selection
- 4-Code output: 2 Tone, 2 dry contact
- Tone codes: PSNI and March Time or Temporal
- Dry Contact code outputs: PSNI and March Time or Temporal
- Low Current
- Fail Safe operation mode
- Dip Switch Selectable operating modes
- Mounts in cabinet in 1/2 size footprint space

#### MTM-1, March Time

- Three input selectable codes
- Low current
- Form C relay contacts out
- Mounts in cabinet in 1/2 size footprint space



## Specifications

	<b>CDR-3, PSNI</b>	<b>MTM-1, March Time</b>
Input Voltage	24Vdc	24Vdc
Contact Ratings	30 Vdc @ 4 Amps (pf. 35) 25 Vrms @ 100 Watts 70 Vrms @ 100 Watts	30 Vdc @ 4 Adc (pf. 35)
Standby Current	60 mA	N/A
Active Current	100 mA	30 mA
Tone Outputs (isolated)		
Output Impedance	1.2K Ohm	N/A
Output Voltage	3.5VRMS	
EOL	10K Ohm	
Coded Output		
Code Format	4 or 6 rounds, 1-4 digits, each digit 1-9 (1-35 on EST3 only)	N/A
Extended Range Format	4 rounds, 1-3 digits, 1 digit 1-15 and 2 digits 1-9	
Number of different codes	1,000,000	
March Time Output	60 or 90 Beats Per Minute (configurable)	60 Beats Per Minute
RS-232 Baud Rate	600, 1200, 2400, or 4800	N/A
Environment	32°F - 120°F (0°C - 49°C) 93% RH, Non-condensing	
Listings	ULI, FM, ULC, CSFM	

## Ordering Information

<b>Model</b>	<b>Description</b>
CDR-3	PSNI Coder Module
MTM-1	March Time Coder Module
EXR	Polarized Coder Relay
ARM-8	Auxiliary Relay Module
ARA-1	Auxiliary Relay



LIFE SAFETY & INCIDENT MANAGEMENT

**Contact us**

Phone: 800-655-4497 (Option 4)

Email: [edwards.fire@carrier.com](mailto:edwards.fire@carrier.com)

Website: [edwardsfiresafety.com](http://edwardsfiresafety.com)

8985 Town Center Pkwy  
Bradenton, FL 34202

© 2020 Carrier  
All rights reserved.

---